

# THE WOODLANDS TRAIL

55+ ACTIVE ADULT COMMUNITY

QUARTERLY COMMUNITY NEWSLETTER

3RD QUARTER- 2021



"Like a welcome summer rain, humor may suddenly cleanse and cool the earth, the air and you." - Langston Hughes

The Woodlands Birch Tower is now complete and the sense of community is flourishing like the summer. The Commons is filling each day with friends enjoying all that The Woodlands has to offer. Playing games and puzzles, watching movies, listening to concerts, tasting food, having a grill party the opportunities abound. The vision the developer, Curt Lund, had for the Woodlands is becoming the reality for the owners of the Woodlands. Certainly a time for celebrating!

The Woodlands  
100 Woodlands Way  
Kalispell MT 59901



Find us on the web at [WoodlandsMT.com](http://WoodlandsMT.com)

Linda P : Cell: (406)-249-3445  
Phone: (406) 407-9024

Email:  
[lindap@fvbmt.com](mailto:lindap@fvbmt.com)  
[thewoodlandsmt@outlook.com](mailto:thewoodlandsmt@outlook.com)



# Downsizing: Overcoming the obstacles

*By Curt Lund*

It may be hard to leave your home of many years, but it could be the best decision you can make. Obstacles to downsizing are: the work involved to sell your home, getting rid of things you cannot take with you, and moving.

There are the obvious benefits from selling your home: lack of unexpected maintenance bills, relief of the time involved in maintaining your home, freedom to travel without worry about your home.

Selling your home and downsizing is a huge decision. Many times, your children are a big influence in the decision. It is important to keep them informed but the decision is really yours to make. Your home has many memories, and it is a comfortable place for you to live. However, with downsizing, you can begin to create new memories that were not possible at your present home.

Here are some of the benefits to selling your home and moving into the Woodlands:

The monthly homeowners' dues are \$300 per month. This includes very fast internet that is not shared with anyone, homeowners' insurance on your unit, all maintenance to common areas and the outside spaces, sewer and water, and staff to assist you with your needs. You only pay for your electricity. So, living at the Woodlands will reduce your monthly cost of living.

No unexpected maintenance bills.

More time to enjoy your hobbies and visit with friends.

Secure living as explained elsewhere in this newsletter.

Travel without the worry of your home.

The Commons, a place where owners gather to enjoy each other. The Commons is also a place where you can hold family gatherings.

The Woodlands is a condominium meaning you own your residential unit, your parking stall in the garage and your storage space. Because of the special features of the Woodlands, we believe your investment in the Woodlands will be a good one.

Overcoming the obstacles of moving and downsizing is helped greatly with careful planning. Getting the help in areas you need help. With careful planning, you can eliminate many obstacles and turn the experience into a great time of your life.



## BY THE NUMBERS

**237** The number of windows in each tower.

**7000** The square footage of The Commons.

**67,000** The approximate square feet of each tower.



Birch Tower Ribbon Cutting

## DID YOU KNOW?

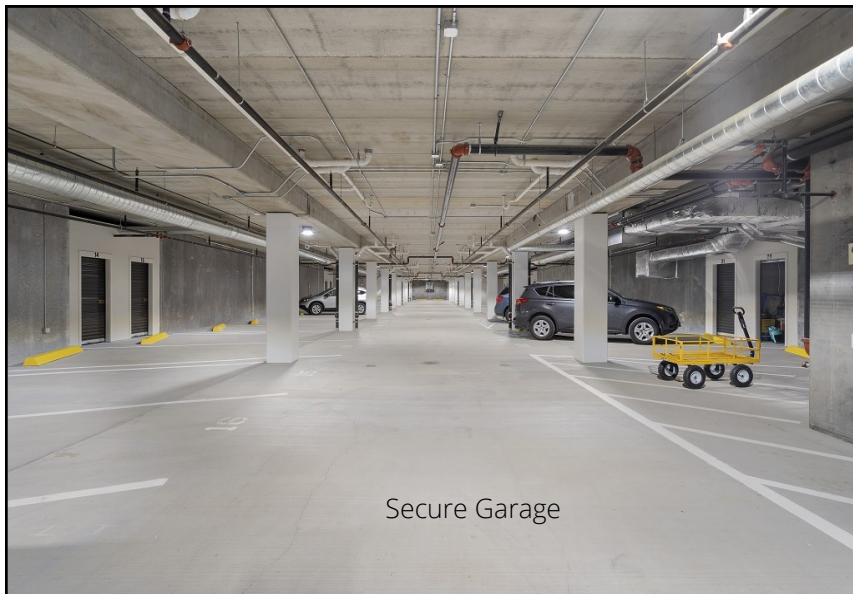
Security and Safety is a top priority in designing **The Woodlands** so the following is included:

- Enclosed, heated, and locked Parking Garage on first floor
- Residential Units start on 2nd floor (15 ft. above ground for added security and privacy)
- Locked down facility 24/7
- Security Personnel
- State of the art fire suppression system
- Keys are also designed to not be duplicated and record is kept of each key made and dispersed.

**FVB**

FLATHEAD VALLEY  
B R O K E R S

*Re*DEFINING REAL ESTATE



Secure Garage

# OWNER SPOTLIGHT

Trudy  
Bouchey

Trudy is a bit camera shy, but can be seen often doing puzzles with the girls!

**How long have you lived at the Woodlands?**

I moved into the Woodlands January of 2021.

**What do you enjoy about living here?**

The quiet area suits me. The security is a big plus. The people I have met are super friendly. I have gained some really wonderful girl-friends. I am going through a rough patch of health problems and they are the best support group.

We get together almost daily and work puzzles in the common area. I'm sure you have heard us, we get pretty loud some days.

**Tell us about yourself. Where are you from?**

Until I retired we lived in Columbia Falls. We then moved to the lake in Elmo and lived there until my husband passed in 2020. I came back to Kalispell to be closer to my family.

**Work background?**

I retired from the Montana Veterans Home in Columbia Falls.

**Hobbies and interests?**

I like to crochet, read, do puzzles and play games.



# UPCOMING EVENTS



Ice-cream Social, Wednesday, July 28<sup>th</sup> 1pm.



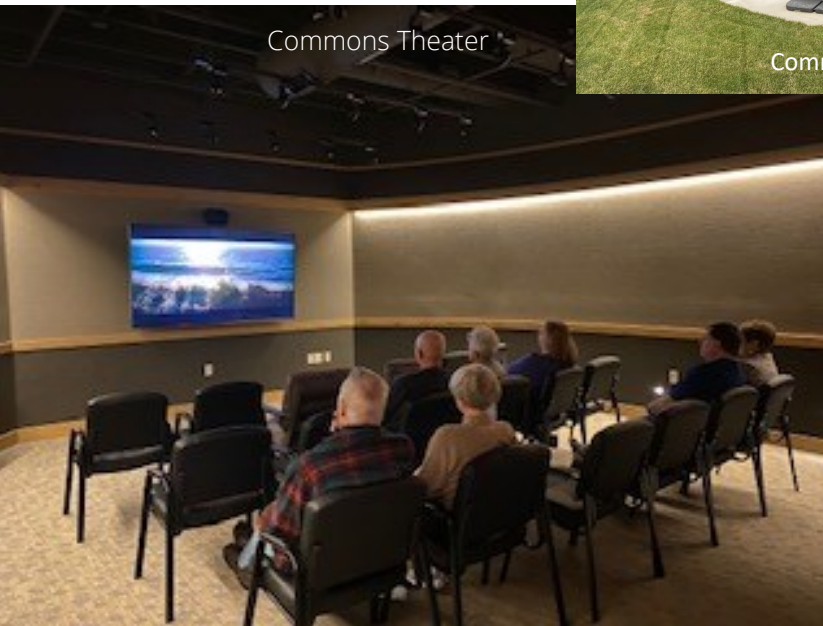
Common's Patio BBQ,  
August 5<sup>th</sup> 5pm



Commons Patio



Commons Theater



Concert in the *Commons*,  
September 18<sup>th</sup> @ 3pm,  
Songs of Hope and Inspiration,  
performed by Stave Flatau (Baritone)

Movie every Thursday at 1pm



Salad Social

Salad Social - Tuesday  
August, 17<sup>th</sup>  
11:30 am



Katy

Katy's Hours  
Mon-Fri  
9:00am-1pm  
406.407.9523

The   
**Woodlands**  
ACTIVE ADULT COMMUNITY