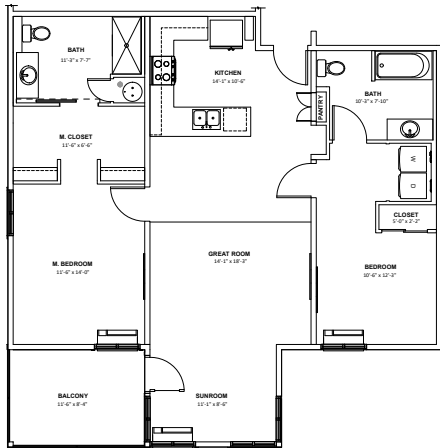


Two Bedroom Interior Builder Incentive Pricing Spruce Tower



2 nd Floor	\$317,900	\$276,900
3 rd Floor	\$338,900	\$296,900
4 th Floor	\$379,900	\$337,900

*Prices subject to change.
Builder incentive pricing for purchase agreements signed before May 31, 2019.*

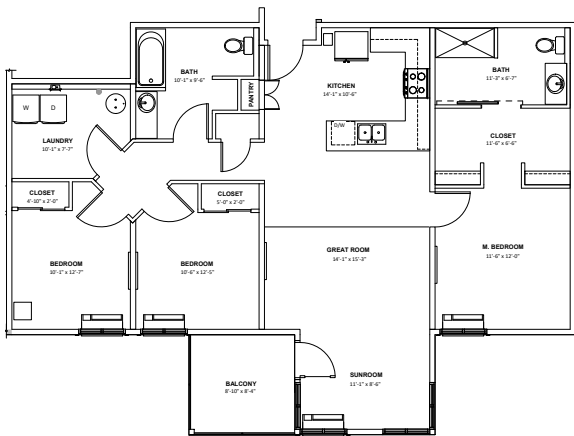


Two Bedroom Corner Builder Incentive Pricing Spruce Tower



2 nd Floor	\$340,900	\$295,900
3 rd Floor	\$362,900	\$317,900
4 th Floor	\$407,900	\$361,900

*Prices subject to change.
Builder incentive pricing for purchase agreements signed before May 31, 2019.*

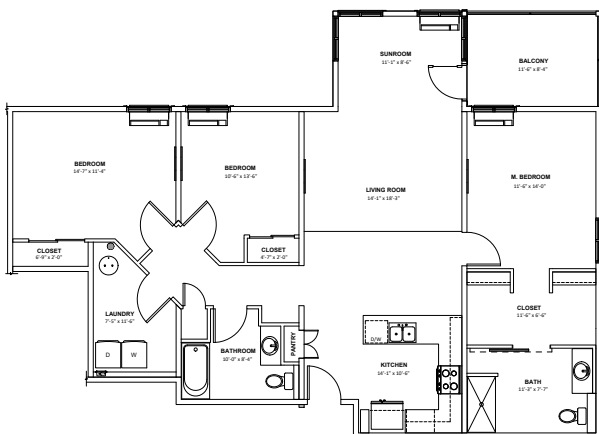


Three Bedroom Interior Builder Incentive Pricing Spruce Tower



2 nd Floor	\$378,900	\$328,900
3 rd Floor	\$403,900	\$353,900
4 th Floor	\$453,900	\$402,900

*Prices subject to change.
Builder incentive pricing for purchase agreements signed before May 31, 2019.*



Three Bedroom Corner Builder Incentive Pricing Spruce Tower



2 nd Floor	\$419,900	\$363,900
3 rd Floor	\$447,900	\$392,900
4 th Floor	\$503,900	\$446,900

*Prices subject to change.
Builder incentive pricing for purchase agreements signed before May 31, 2019.*